



ADVANCING INDEPENDENCE FOR ADULTS WITH DISABILITIES

**76 South Orange Ave., Suite 205**

**South Orange, NJ 07079**

**973-762-6909**

**[jespyhouse.org](http://jespyhouse.org)**

# About JESPY House

- ▶ Located in South Orange
- ▶ Established in 1978
- ▶ Serve ~300 adults with I/DD
- ▶ 18-70+ years old
- ▶ Provide programming to help clients achieve their full potential and advance independence
- ▶ Funding Options: Division of Developmental Disabilities (DDD), Division of Vocational Rehabilitation Services (DVRS), Private Pay, and Commercial Insurance



# JESPY Services

- ▶ Residential Services-The Residence, Shared Housing, Out client
- ▶ Community-Based Supports (CBS)-Case Management and Daily Living Skills (DLS)
- ▶ Day Habilitation-Day Program, Transitions and Aging in Place
- ▶ Work Readiness & Employment Engagement (WREE)-Vocational and Pre-Vocational
- ▶ Engagement & Enrichment Program (EEP)-Recreation
- ▶ Athletics & Fitness-Special Olympics and Tico's Gym
- ▶ Clinical and Behavioral Health Services
- ▶ Health Education & Support-OT and PT



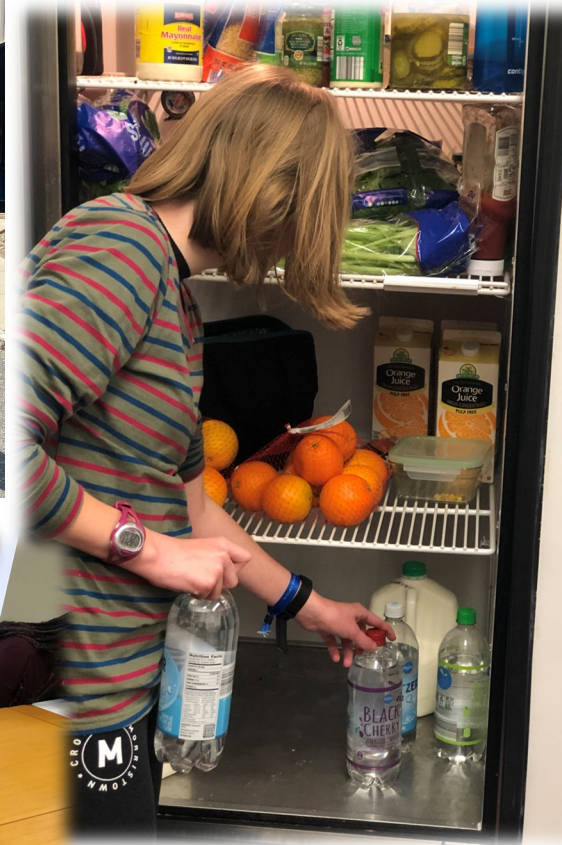
# Day Habilitation

- ▶ Monday-Friday 9am-3pm
- ▶ Day Program
- ▶ Aging in Place
- ▶ Transitions



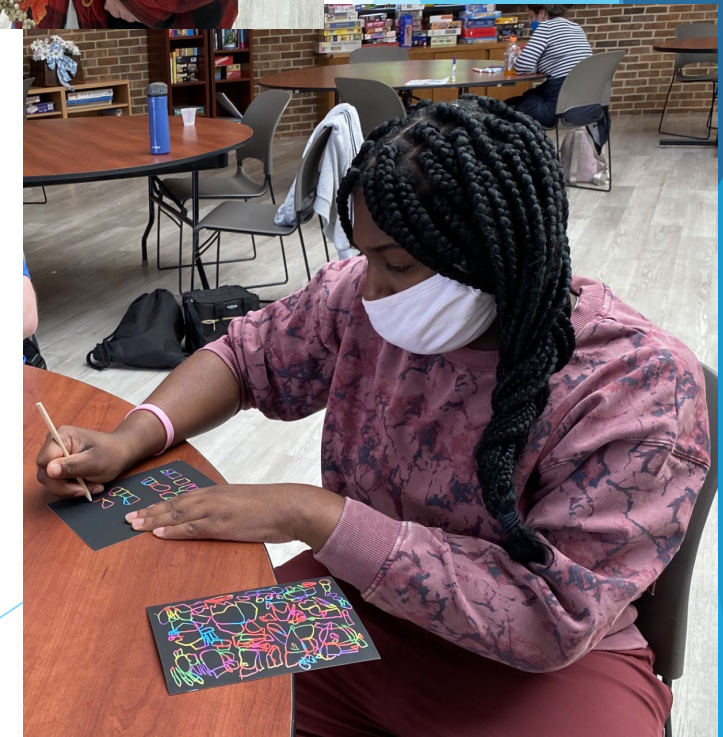
# Transitions

- ▶ Community integration, awareness and safety
- ▶ Daily living skills (budgeting, meal planning, food preparation, kitchen safety, time management, laundry)
- ▶ Group travel training
- ▶ Group outings
- ▶ Self-advocacy skills
- ▶ Social and coping skills groups/education
- ▶ Conflict resolution
- ▶ Referrals to Vocational Services



# Transitions

- ▶ Building Confidence
- ▶ Social and Coping Skills
- ▶ Health and Safety
- ▶ Critical Thinking
- ▶ Music Relaxation Therapy
- ▶ Dance and Aerobics
- ▶ Academic Achievements
- ▶ Current Events
- ▶ Money Skills
- ▶ Physical Fitness Activities
- ▶ Recreational Activities



# The Residence Transition Program

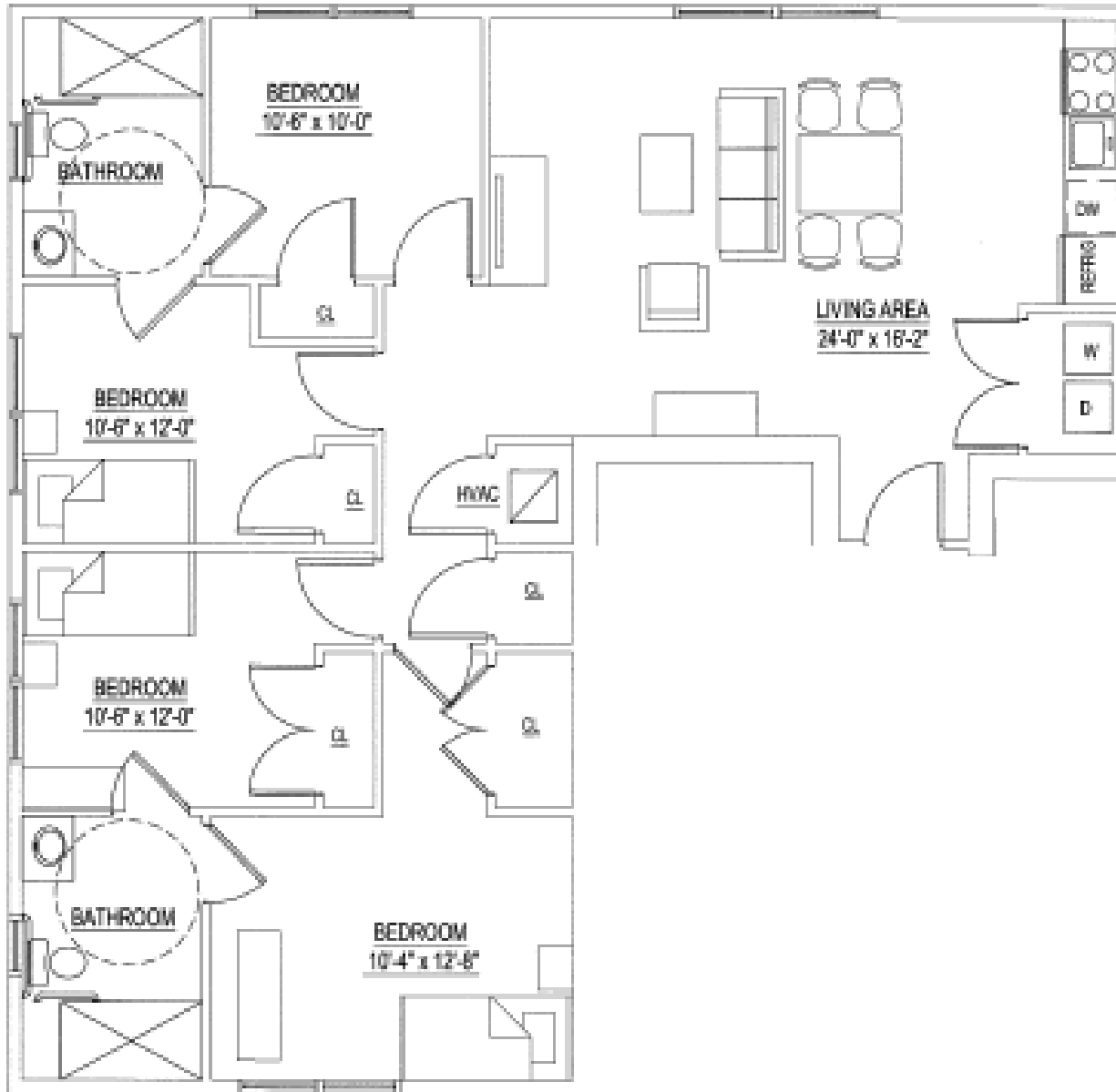
- ▶ Most clients accepted into JESPY House begin at The Residence, a semi-structured, supervised apartment setting staffed with case managers and daily living skills counselors. Support is available 24 hours a day, 7 days a week.
- ▶ While living at The Residence, clients receive case management and focused training on independent living skills in their apartments.
- ▶ Targeted skills include:
  - Laundry
  - Cleaning
  - Weekly meal planning, food shopping, and cooking
  - Money management
  - Health and safety
  - Socialization



# The Hub Transition Program



- **FIVE, 4-bedroom, 24/7 Supervised Apartments**
- **Youth Residents ages 18 on up at The Hub will be staffed 24/7.**
- **The Hub is a transitional program designed for young adults. Participants typically stay with us for 2 to 4 years, during which time, working with staff and case managers, learn how to consistently use their skills to become and remain independent.**
- **The Hub is designed to empower adults with IDD to enhance their independence and quality of life.**



- **Personalized Support** is tailored to each of our resident's specific needs and goals.
- By recognizing our client's unique strengths and challenges, we help them develop skills and strategies to navigate daily tasks and make informed decisions.
- **SKILL DEVELOPMENT:** Through a variety of activities and training sessions, we focus on enhancing essential life skills such as independent living, self-care, apartment maintenance, and social interaction.
- **COMMUNITY INTEGRATION:** We promote community integration by facilitating opportunities for social engagement and participating in recreational activities. By fostering connections with the broader community, we aim to enhance social inclusion and promote a sense of belonging among our residents.



# Questions?

Joseph Calabrese, Admissions Coordinator

973-762-6909 x302

[jcalabrese@jespy.org](mailto:jcalabrese@jespy.org)

Program Information:

[intake@jespy.org](mailto:intake@jespy.org)

General Inquires:

[administration@jespy.org](mailto:administration@jespy.org)

